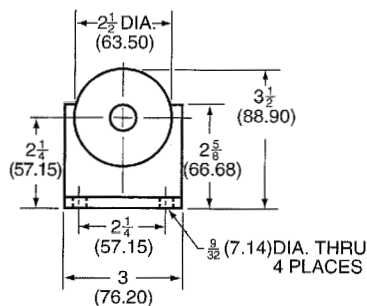
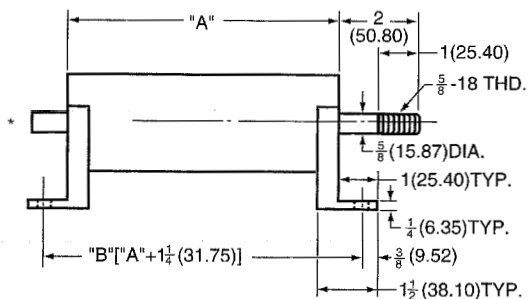


# LINEAR MOTION PRECISION POTENTIOMETERS

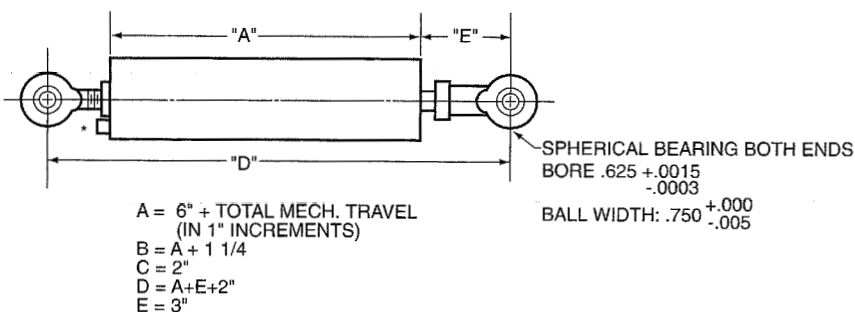
## MODEL 110 TUFF-LINE

### INFINITE RESOLUTION

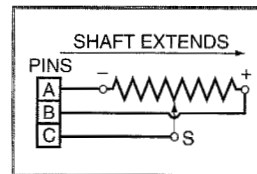


\*Receptacle and mating plug

"A" = 6" (152.40) + TOTAL MECH. TRAVEL (IN 1" (25.4) INCREMENTS)



A = 6" + TOTAL MECH. TRAVEL  
(IN 1" INCREMENTS)  
B = A + 1 1/4  
C = 2"  
D = A+E+2"  
E = 3"



## SPECIFICATIONS

### ELECTRICAL

Resistance Range ±20%	500Ohms/inch To 100KOhms/inch
Independent Linearity or Conformity	To ±0.01% (Depending on Stroke)
Electrical Stroke ±0.015	12 inches to 48 inches
Maximum number of taps	-
Power Dissipation	1 Watt/inch
Temperature Range	-55°C to 105°C
Dielectric Strength	750V RMS

\* See **OPTIONAL Electrical Characteristics**

### MECHANICAL

Mechanical Travel Beyond Stroke	+0.250, -0.0 inches
Max Starting Force (Depending on Stroke)	16oz-24oz @ 25°C
Stroke Velocity	50 inches/second
Shaft Free to Rotate	Yes
Misalignment	No

\* See **OPTIONAL Mechanical Characteristics**

-- An Electromotive Solutions Company --

2800 ANVIL STREET NORTH • ST. PETERSBURG, FL 33710 USA • PHONE: (727) 347-2181 • Fax: (727) 347-7520