

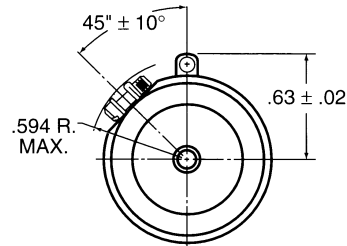
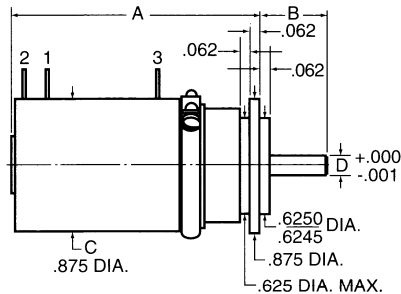


SYSTEMS, L. L. C.
WWW.VSENSORS.COM

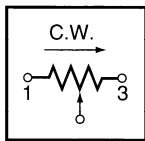
ROTARY PRECISION POTENTIOMETERS

8400-8500 SERIES

7/8" DIA WIREWOUND, MULTI-TURN SERVO-MOUNT



**MULTI-GANGS AVAILABLE
UP TO THREE SECTIONS**



ORDERING INFORMATION
8500 — 001 — 50K
Indicate Type Number Servo Mount Indicate Resistance Value

DIMENSIONS					
Model	Turns	Length		Diameter	
		A (Body)	B (Bushing)	C (Body)	D (Shaft)
8400-001	10	1.583*(40.2)	.500*(12.7)	875*(22.23)	.250*(6.35)
8500-001	10	1.583*(40.2)	.500*(12.7)	875*(22.23)	.125*(3.18)
8403-001	3	1.099*(27.91) 1.099*(27.91)	.500*(12.7)	875*(22.23)	.250*(6.35)
8503-001	3	1.099*(27.91) 1.099*(27.91)	.500*(12.7)	875*(22.23)	.125*(3.18)
8405-001	5	1.224*(31.09) 1.224*(31.09)	.500*(12.7)	875*(22.23)	.250*(6.35)
8505-001	5	1.224*(31.09) 1.224*(31.09)	.500*(12.7)	875*(22.23)	.125*(3.18)

NOTE: Metric conversion in mm in brackets

SPECIFICATIONS

ELECTRICAL

	STANDARD
Power Rating	8400/8500—3W @ 70°C; 8403/8503, 8405/8505—2W @ 40°C
Standard Resistance Range	8400/8500—100Ω to 100KΩ 8403/8503, 8405/8505—50Ω to 50KΩ
Resistance Tolerance	±5% std.
Temperature Coefficient (wire)	±20ppm/°C max.
Linearity (independent)	8400/8500—±0.25% 8403/8503—±0.5%, 8405/8505—±0.5%
Noise During Adjustment (ENR)	100Ω max.
Absolute Minimum Resistance	2Ω or 0.25% (W.I.G.)
Insulation Resistance	1000MΩ @ 500 VDC

MECHANICAL

	STANDARD
Operating Temperature Range	-55° to +125°C
Total Adjustment Turns	8400/8500—10; 8403/8503—3 8405/8505—5
Mechanical Rotation	Same as electrical rotation

Operating Torque	1.0 oz.-in. max.
Mechanical Stops	48 oz.-in. min.
Electrical Travel	8400/8500—3600° (+10°-0°) 8403/8503—1080° (+10°-0°) 8405/8505—1800° (+10°-0°)
Rotational Life	200,000 shaft revolutions

ENVIRONMENTAL

Models 8400, 8403, 8405, 8500, 8503 and 8505 meet, or exceed, all of the environmental and life requirements of MIL-R-12934.

Standard Resistance Values Available (Ω)	Nominal Resolution (%)	
	8400/8500	8403/8503 8405/8505
50	—	0.153
100	0.062	0.119
200	0.046	0.113
500	0.036	0.074
1K	0.030	0.070
2K	0.025	0.047
5K	0.018	0.047
10K	0.015	0.041
20K	0.015	0.030
30K	0.011	0.025
50K	0.010	0.025
100K	0.009	—

— An Electromotive Solutions Company —

2800 ANVIL STREET NORTH • ST. PETERSBURG, FL 33710 USA • PHONE: (727) 347-2181 • Fax: (727) 347-7520